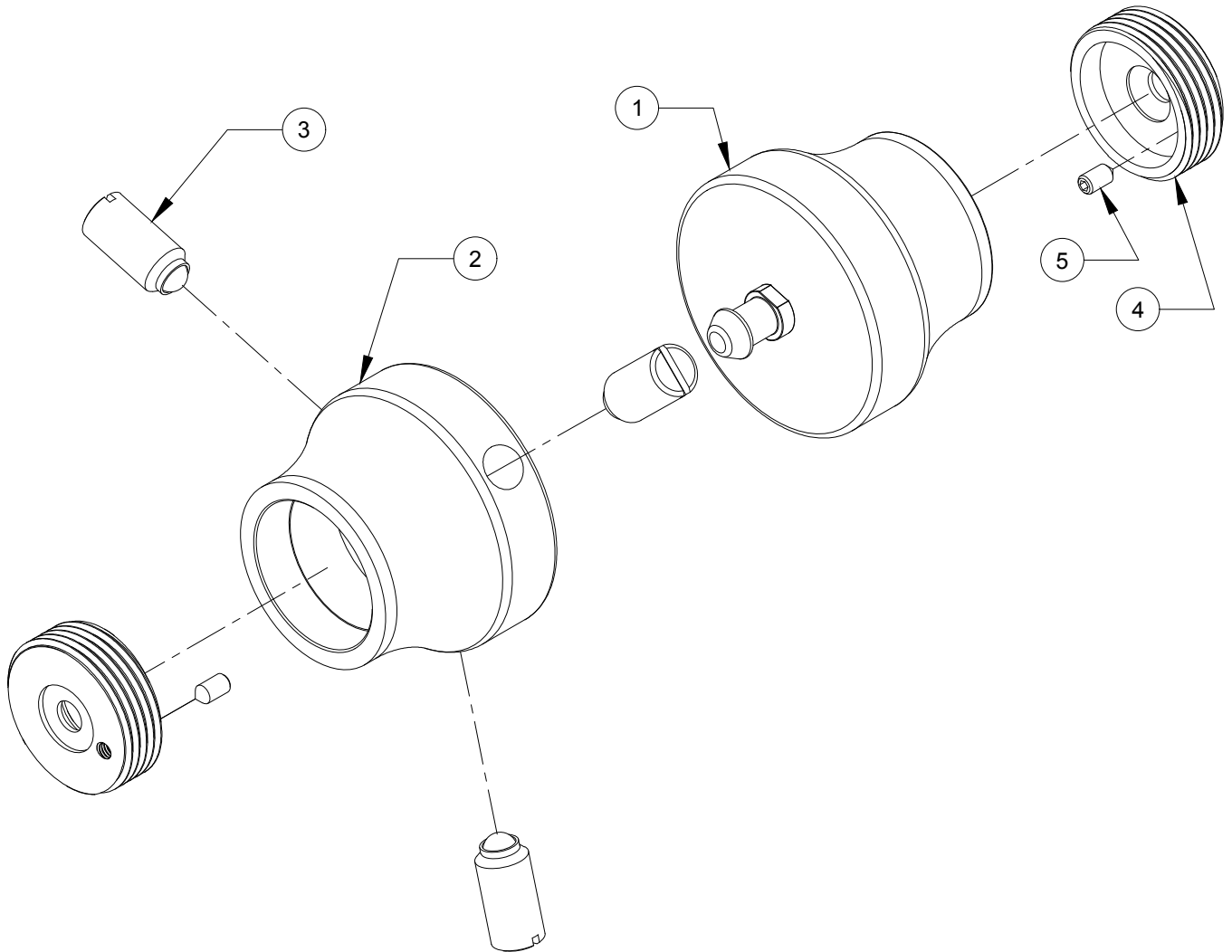


# DBPC-03 Heavy Duty Mechanical Panel Catch

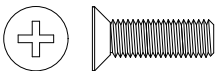


## FIXING PACK CONTENT



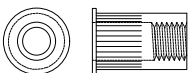
QTY 2

No10x25mm self tapping screw BZP



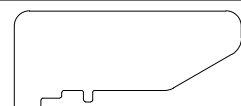
QTY 2

M5x16mm machine screw BZP



QTY 2

M5 Rivnut BZP



QTY 1

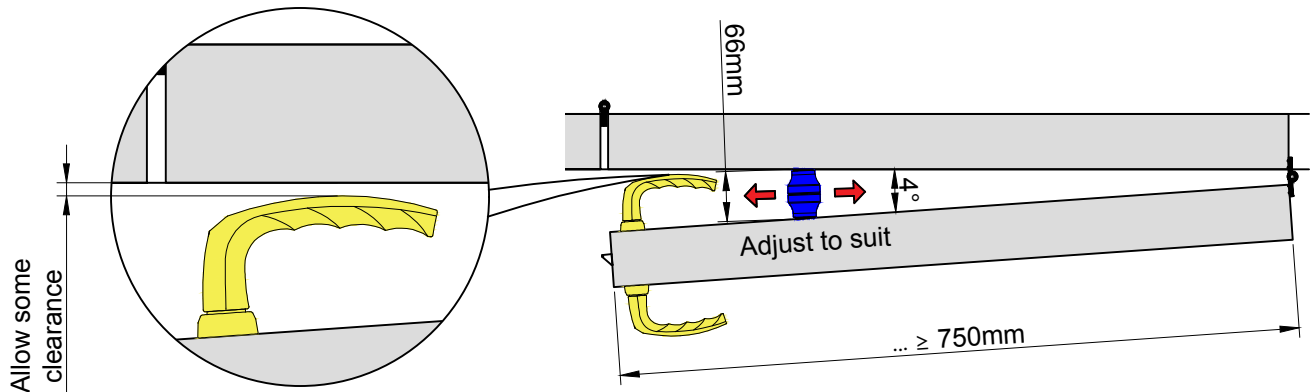
Back plate turn key

## B.O.M.

No.	Description	QTY
1	Male Catch	1
2	Female Catch	2
3	Spring plunger	3
4	Back plate	2
5	M3x7mm Anti-rotation screw	2
6	Fixing pack	1

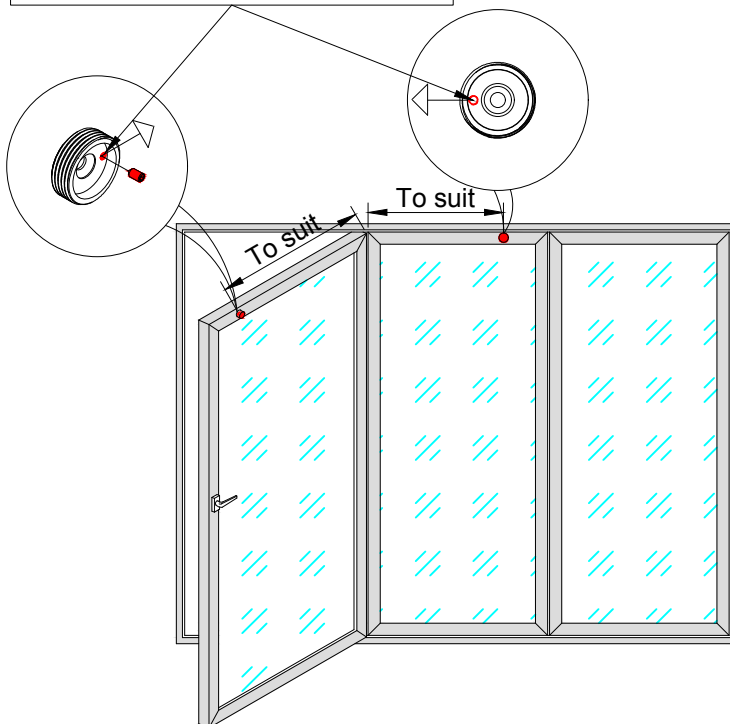
# Installation Instructions

1. Position assembled panel catch set at the place where swing door should stop and provide sufficient clearance for lever-lever handle.  
**(Do not unscrew back plates at this stage)**



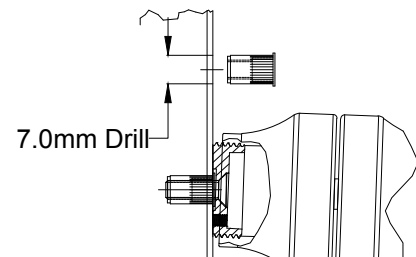
2. Firstly, mark center position for female catch.
3. Use the key provided to remove back plate and fix the plate at marked position.
4. Screw and tighten anti-rotation grub screw, ensure it is pointing to the swing panel hinge.
5. Assemble female catch.

Anti rotation screw hole must be positioned horizontal pointing to the swing panel hinge on both doors.



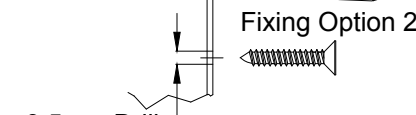
Back plate  
Fixing Option 1

M5.0 x 15mm Machine  
Screw into Rivnut (recommended  
for Chambered Systems)



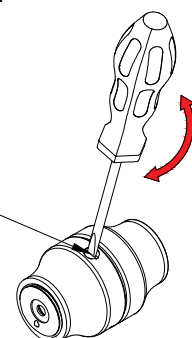
Fixing Option 2

3.5mm Drill  
Csk self Tapping  
Screw (recommended  
for Solid systems)



6. Connect both panel catches and mark the center position on the opposite door.
7. Repeat steps 3 to 5 for male catch.

Use spring plunger to  
adjust locking strength



8. Adjust panel catch locking strength by rotating spring plunger.